



US Grand Prix of Cyclocross (C1)
GP Clark Natwick 11-20-05
Golden Gate Park, San Francisco, California
www.pilarcitos.com

Organizer

Pilarcitos Cyclesports
732 Fairfield Road
Burlingame, California 94010
e-mail – info@pilarcitos.com

Race Directors: Tom Simpson 650.302.6310
Alec Simpson 650.302.5410

Registration: Greta Simpson & Team

Speakers: Richard Fries
Tom Simpson

International Commissair: Phil Miller

Assistant Commissaires: Carla Geyer
Sue Hefle

USCF Event Officials:

Casey Kerrigan – Chief Referee	Barry Parks – Asst Judge
Jeff Wu – Asst Referee	Jenny Yu – Asst Judge
Ryan Fu - Chief Judge	Kevin McKee – Asst Judge

Timing/Results Tom Simonson

Officials Permanence

Located on The finish line next to the main stage. (see Venue map detail)
Electrical power supplied on site.

Media Tent

Located on The finish line next to the main stage. (see Venue map detail)
Electrical power supplied on site.

Unfortunately no internet facility on site.

Closest WiFi location:

Internet Wired Café (approx. 1 mile from venue)

1392 9th Ave
San Francisco, CA 94122

[\(415\) 664-9293](tel:4156649293)

Opening Hours Sunday, 11-20-05 07.00 – 17.00



US Grand Prix of Cyclocross (C1)
GP Clark Natwick 11-20-05
Golden Gate Park, San Francisco, California
www.pilarcitos.com

UCI RULES

UCI International Licenses required for Elite/u23 Men and Elite Women only. USA Cycling License or 1 –day license is required for all other events. Your racing age is your age as of December 31st, **2006. (Not 2005)**

Rider Call-up Procedures:

- Elite Men / U23 Men

From the UCI Rules: 5.1.043 The start order of events is determined as follows:

b) In other events except the world championships:

· Elite Men and Women and Under 23 Men: as per the latest published individual UCI Cyclo-cross Classification.

Start Order will be determined by UCI points from Highest to Lowest as per the latest published individual UCI Classification. This classification can be found on the UCI Website under the subsection Cyclocross, then Rankings. The start order will be corresponding with each rider's Start / Bib Number.

Start Order for riders with 0 UCI points will be determined by their registration. Riders will be assigned a number in the order that they registered. This number will be their Bib / Start number. They will be called up to the starting line by this number.

- Elite Women

From the UCI Rules: 5.1.043 The start order of events is determined as follows:

b) In other events except the world championships:

· Elite Men and Women and Under 23 Men: as per the latest published individual UCI Cyclo-cross Classification.

Start Order will be determined by UCI points from Highest to Lowest as per the latest published individual UCI Classification. This classification can be found on the UCI Website under the subsection Cyclocross, then Rankings. The start order will be corresponding with a riders Start / Bib Number.

Start Order for riders with 0 UCI points will be determined by their registration. Riders will be assigned a number in the order that they registered. This number will be their Bib / Start number. They will be called up to the starting line by this number.



US Grand Prix of Cyclocross (C1)
GP Clark Natwick 11-20-05
Golden Gate Park, San Francisco, California
www.pilarcitos.com

- Junior Men
From the UCI Rules: 5.1.043 The start order of events is determined as follows:
b) In other events except the world championships:
· Juniors: By drawing lots.

Start Order for Junior riders will be determined by drawing lots at the time of registration. Each Junior Rider will be allowed to draw, at random, a Start / Bib number. The number drawn will be their Bib / Start number. They will be called up to the starting line by this number.

- Master 35+ Men
In the first race of the series, Master 35+ men will be called up according to those who have points from the previous year U.S. Gran Prix standings. From the second race on, all M35+ men who have points in the current year series will be called up, and then according to race number.

U-23 Clarification

Elite Men and U-23 shall ride in the same events with the U-23 being scored separately

Awards Ceremony

The top 3 finishers in every event must report immediately to the podium area for awards and interviews. Awards will take place immediately after the top riders finish and last only a few minutes. **Riders who fail to report immediately will forfeit prizes.**

Pressure Washing

Team mechanics are required to provide a bucket and brush to clean heaviest excess mud off bikes before pressure washing. Pilarcitos staff will wash operate the pressure washers. Pressure washers available only during UCI events and will not be available for post race cleaning.

Pit Area

During UCI events, pits are open only to Authorized personnel. Pit passes will be distributed at registration for UCI races.

First Aid

EMT onsite throughout the day and the First Aid tent will be located next to Registration.



US Grand Prix of Cyclocross (C1) GP Clark Natwick 11-20-05

Golden Gate Park, San Francisco, California
www.pilarcitos.com

Lapped Riders: All riders lapped before the final lap must leave the race the next time they cross the finish line. The rider will be given a placing if he was lapped more than half way through the race. A rider who is lapped on the final lap shall be stopped at the beginning of the finishing strait line and shall be given a placing on the basis of his position.

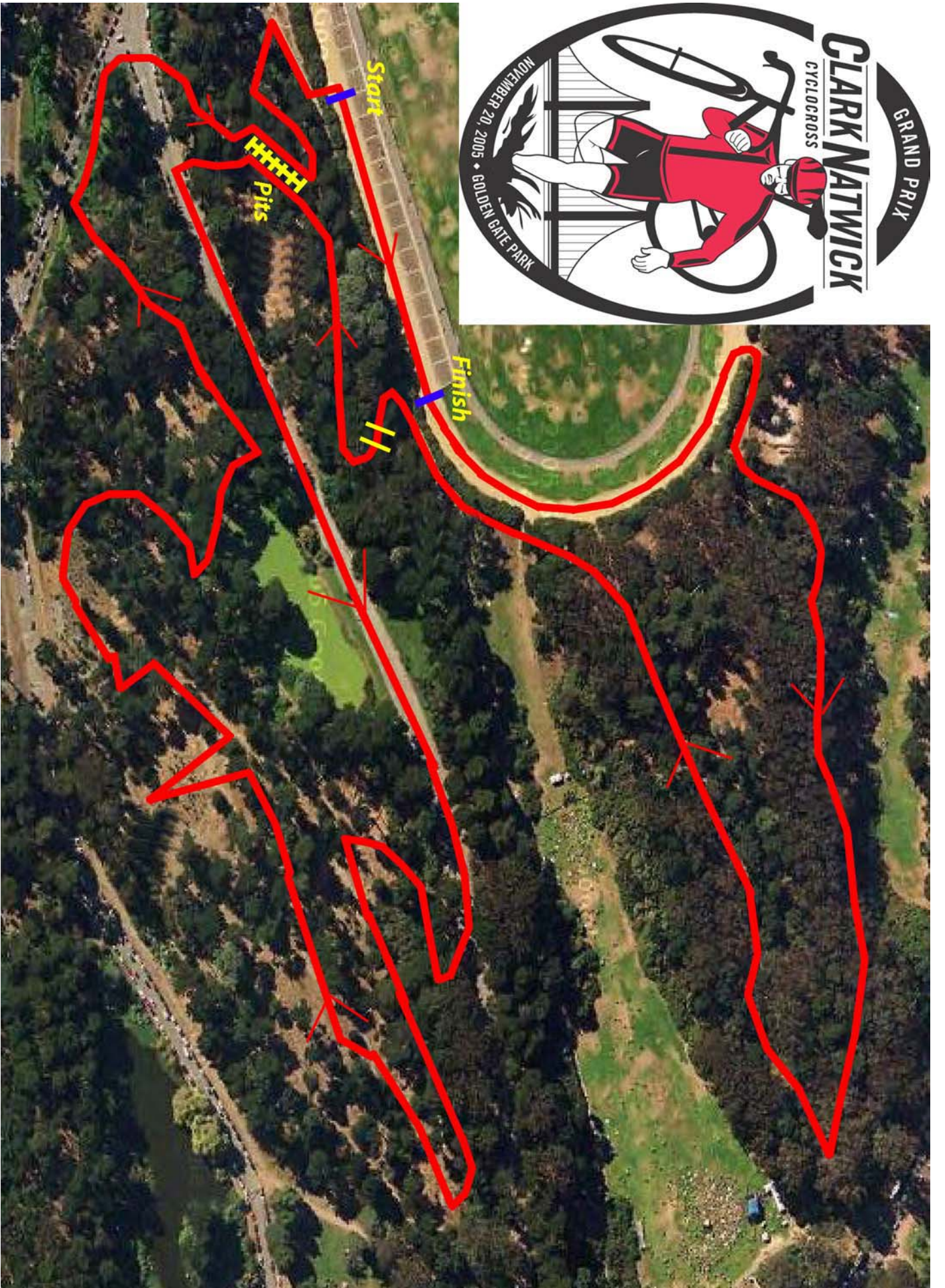
Course Description

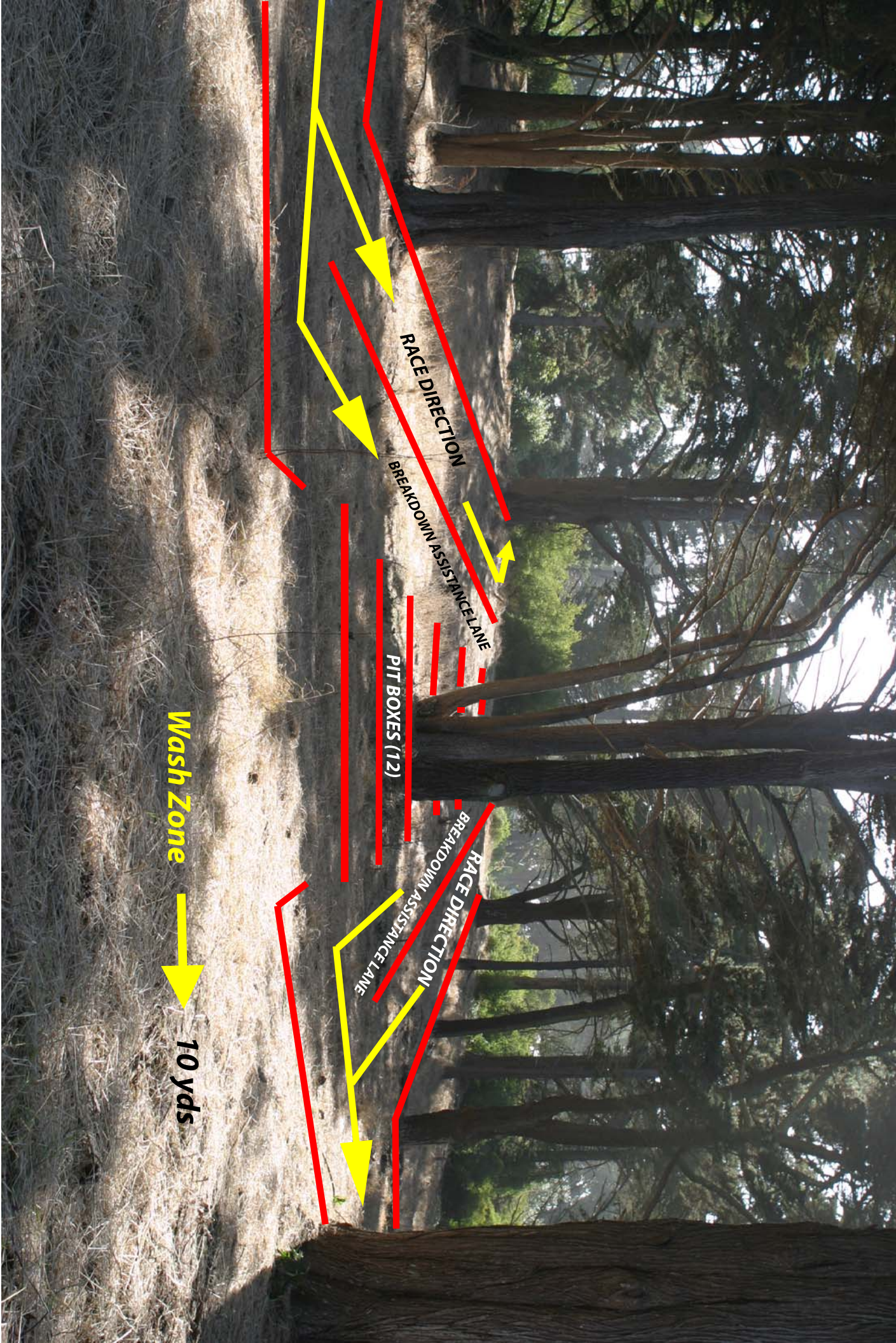
Length – approx. 3,500 yards or 3200 meters

Pavement	500 yards
Clay track	500 yards
Forest paths	2,500 yards

Course starts under the Red Bull inflated arch on the Polo Grounds clay “trotting” track, proceeds to first exit off the track into the “Corral Forest” consisting of dirt paths with minor elevation gains/losses. The course returns in the direction of the Finish structure and encounters first potential dismount heading towards pit zone. After exiting Pit Zone the race proceeds on W. Middle Drive, paved 500 yards with gradual up slope, exiting into the “Metson Lake Forest” region. This section includes the highest elevation on the course plus double barricades and another potential dismount (#2) before the circuit returns to the Pit Zone. The race re-enters the Polo Grounds track and concludes 200 yards later at the finish structure. There will be some sandy zones lasting only a few yards but most dirt paths are firmly packed. Our race courses do not include grass, only weeds.

See Course Map and Pictures





RACE DIRECTION

BREAKDOWN ASSISTANCE LANE

PIT BOXES (12)

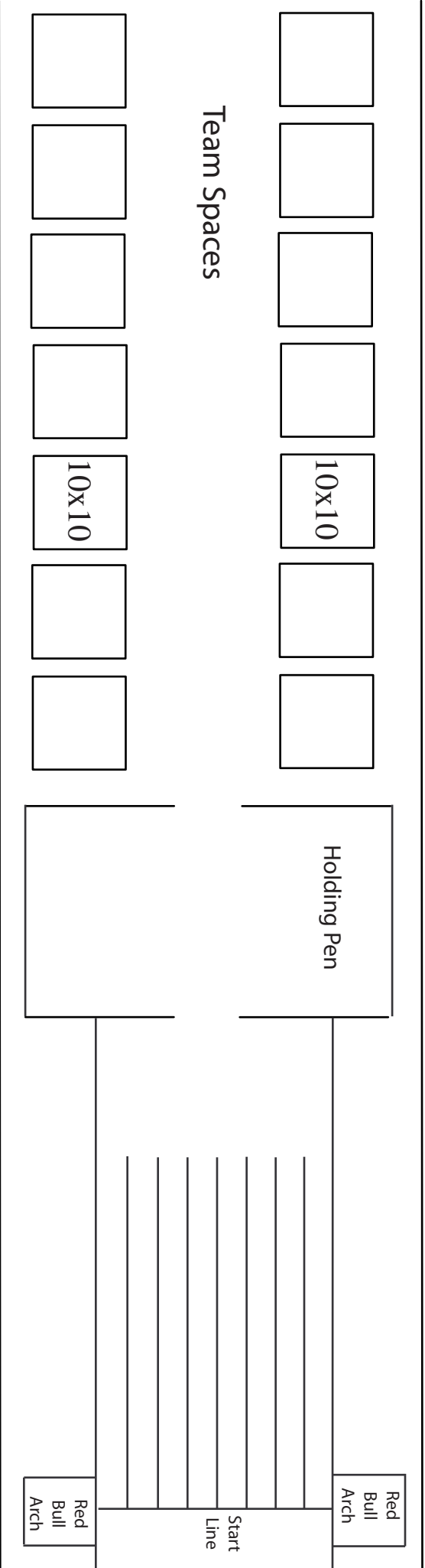
RACE DIRECTION

BREAKDOWN ASSISTANCE LANE

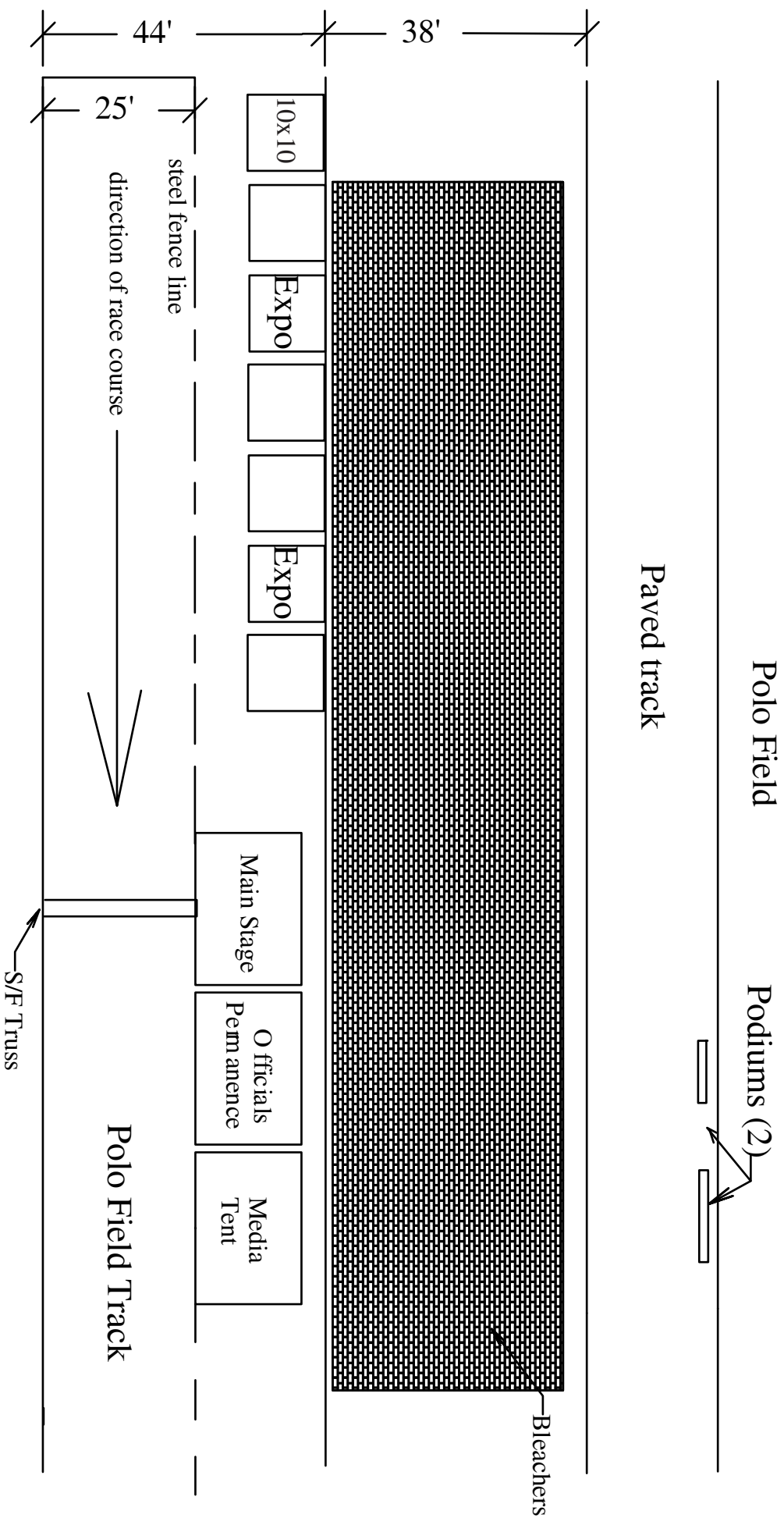
Wash Zone

10 yds

GP Clark Natwick VENUE PLAN Start Line



GP Clark Natwick VENUE PLAN





US Grand Prix of Cyclocross (C1)
GP Clark Natwick 11-20-05
Golden Gate Park, San Francisco, California
www.pilarcitos.com

Hotel Information

Although the race course is in the heart of San Francisco, the closest SF hotels are across town – the same travel time you'd spend coming from the area near San Francisco Int'l. airport. Please investigate facilities in South San Francisco, San Bruno, Millbrae, Burlingame, and San Mateo for rates and availability. Here's the website for the San Mateo County Visitors and Conventions Bureau with all of the places to stay in the county.

<http://www.sanmateocountycvb.com/travel/travel.html>

Travel time to the race course from any of these facilities is 35 minutes. Travel time from these places to Watsonville Fairgrounds for USGP #5 is 90 minutes.

Best Western Grosvenor Hotel, South SF

<http://www.grosvenorsfo.com>

\$79/2 persons

Day's Inn, SSF, Millbrae, San Bruno

<http://www.daysinn.com>

\$60/2 persons

Hampton Inn, SSF

<http://www.hampton-inn.com/hi/sanfrancisco-south>

\$99/2 persons

Travelodge, SSF

<http://www.travelodge.com>

\$67/2 persons

Wingate Inn, San Mateo

<http://www.wingateinns.com>

\$73/2 persons

Red Roof Inn, Burlingame

<http://www.redroofsairport.com>

\$70/2 persons



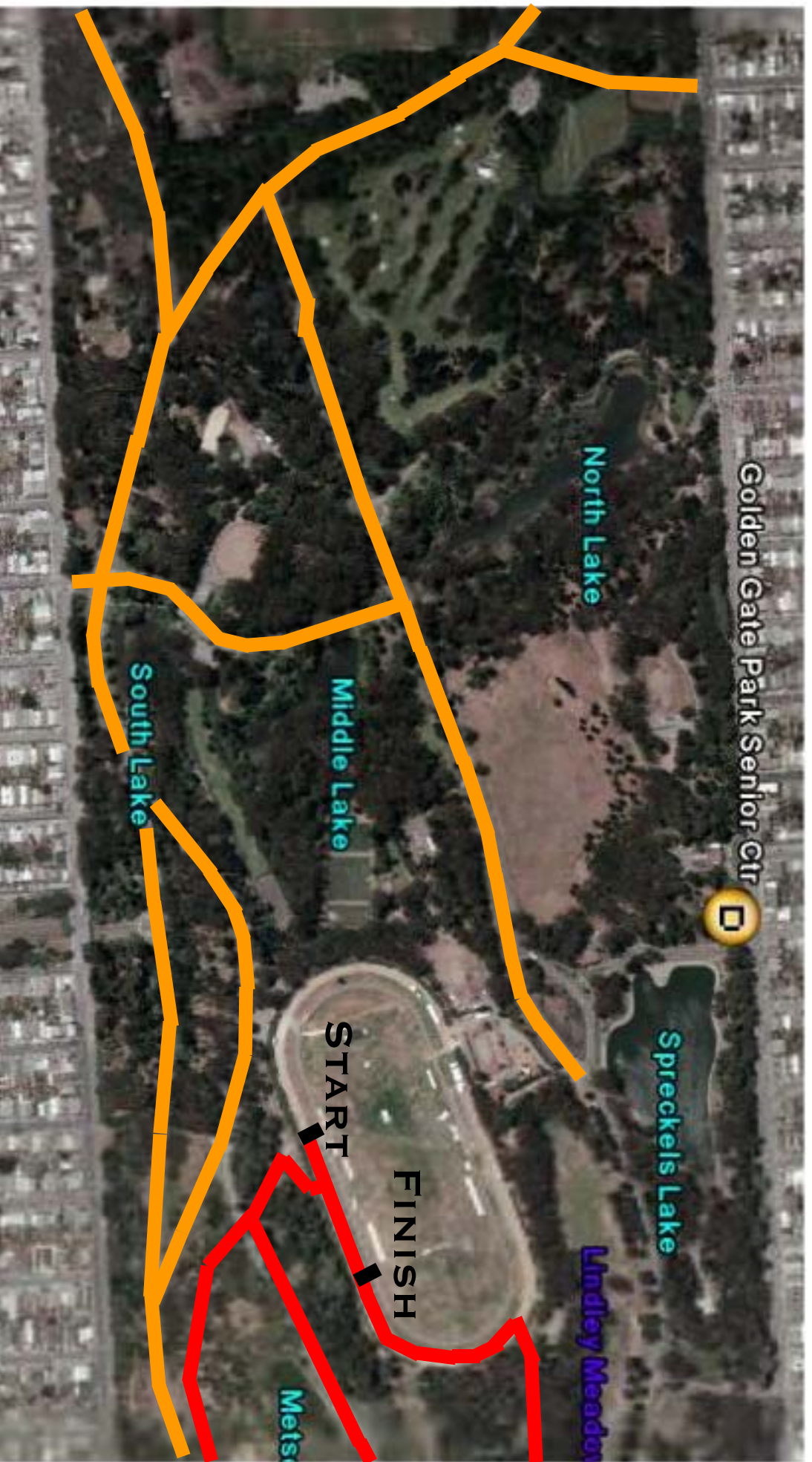
US Grand Prix of Cyclocross (C1)
GP Clark Natwick 11-20-05
Golden Gate Park, San Francisco, California
www.pilarcitos.com

Getting to the Race

From San Jose and the Peninsula - take 280 north past Daly City. Continue North on Highway 1 and turn right on Brotherhood way (cloverleaf turn just past Daly City), travel 1 mile on Brotherhood to Lake Merced Blvd. Right turn on LM Blvd for 1 mile - the road turns into Sunset Blvd. Proceed into GG Park (approx. 3 miles) - right turn on Martin Luther King Jr. Drive - take 1st left (Metson Road) to Middle Drive West. Park on Middle Drive West and other on-street locations inside GG Park. Look for Directional Signs.



From East Bay take 80 west across Bay Bridge, take Mission St. exit to Van Ness. Left turn on Van Ness to Hayes, left turn on Gough, right turn on Fell St for approx 2 miles into GG Park. Left turn onto Kezar Dr, right turn on Lincoln Way to Sunset Blvd. and follow signage to venue and parking.



THERE ARE NO PARKING LOTS IN GOLDEN GATE PARK!

— ON STREET PARKING — RACE COURSE

ON STREET PARKING WILL ACCOMMODATE EVERYONE, BUT IT WILL NOT BE ACROSS THE STREET FROM THE START

TEAM SPACE IS AVAILABLE AT THE START FOR YOUR TENT.

PLEASE CONTACT INFO@PILARCITOS.COM FOR DETAILS



US Grand Prix of Cyclocross (C1)
GP Clark Natwick 11-20-05
Golden Gate Park, San Francisco, California
www.pilarcitos.com

Schedule

Start Time	Categories	Duration	Prizes/Places	Entry Fee
8:00	Women Cat. "B"	40 minutes	Merchandise/3	\$25
	Women Cat. "C"	40 minutes	Merchandise/3	\$25
8:50	Cat. "C" Men	40 minutes	Merchandise/3	\$25
	Master 35 "B"	40 minutes	Merchandise/3	\$25
9:40	Master 45 "A"	40 minutes	Merchandise/3	\$25
	Master 45 "B"	40 minutes	Merchandise/3	\$25
10:30	Cat. "B"	45 minutes	Merchandise/3	\$25
	Single Speeders	45 minutes	Merchandise/3	\$25
11:30	UCI Juniors	40 minutes	UCI Cash/15	\$25
	non-Elite Juniors	40 minutes	Merchandise/3	\$15
12:30	Master 35 "A"	45 minutes	Merchandise 5	\$25
1:30	UCI Elite Women	40 minutes	UCI Cash/10	\$30
2:30	UCI Elite Men, U23	60 minutes	UCI Cash/30	\$35

register online @



Late fee of \$5 applies after November 13, 2005. Registration Opens at 7:00 AM.

UCI Event Registration opens at 9:00 am

Grand Prix Clark Natwick

UCI Category 1 Prize List

Elite Men	
Place	With CFAD 2% deduction
1	\$ 1,095.21
2	\$ 547.60
3	\$ 393.96
4	\$ 307.29
5	\$ 262.64
6	\$ 219.30
7	\$ 196.98
8	\$ 175.97
9	\$ 153.64
10	\$ 131.32
11	\$ 110.31
12	\$ 87.98
13	\$ 74.85
14	\$ 61.72
15	\$ 52.53
16	\$ 52.53
17	\$ 44.65
18	\$ 44.65
19	\$ 44.65
20	\$ 44.65
21	\$ 35.46
22	\$ 35.46
23	\$ 35.46
24	\$ 35.46
25	\$ 35.46
26	\$ 22.32
27	\$ 22.32
28	\$ 22.32
29	\$ 22.32
30	\$ 22.32
	\$ 4,391.34

Elite Women	
Place	With CFAD 2% deduction
1	\$ 175.97
2	\$ 131.32
3	\$ 87.98
4	\$ 70.91
5	\$ 61.72
6	\$ 52.53
7	\$ 44.65
8	\$ 39.40
9	\$ 35.46
10	\$ 31.52
	\$ 731.45

Junior Men	
Place	With CFAD 2% deduction
1	\$ 78.79
2	\$ 61.72
3	\$ 52.53
4	\$ 48.59
5	\$ 44.65
6	\$ 39.40
7	\$ 35.46
8	\$ 31.52
9	\$ 26.26
10	\$ 22.32
11	\$ 18.38
12	\$ 18.38
13	\$ 18.38
14	\$ 18.38
15	\$ 18.38
	\$ 533.14

Totals	Euros	Dollars	Post 2%deduction
Elite Men	€ 3,344.00	\$4,481.96	\$ 4,391.34
Elite Worr	€ 557.00	\$746.38	\$ 731.45
Junior Me	€ 406.00	\$544.04	\$ 533.16
	€ 4,307.00	\$5,772.38	\$ 5,655.95